

# TMW

Maxwell

DEFIANCE \ NON-CONFORMIST \ QUESTIONING THE  
FUTURE \ MULTI-HYPHENATES \ HYPER-CONNECTED \ NOT  
DEFINED BY ONE THING \ AMBITION \ DO-MORE, DO-ALL \ BE  
YOURSELF \ MAKING YOUR OWN HISTORY \ SHAPING YOUR  
OWN TOMORROW \ STAY TRUE \ BREAK BOUNDARIES \ THE  
ART OF BEING UNIQUE \ DEFIANCE \ NON-CONFORMIST \  
QUESTIONING THE FUTURE \ MULTI-HYPHENATES \ HYPER-  
CONNECTED \ NOT DEFINED BY ONE THING \ AMBITION \  
DO-MORE, DO-ALL \ BE YOURSELF \ MAKING YOUR OWN  
HISTORY \ SHAPING YOUR OWN TOMORROW \ STAY  
TRUE \ BREAK BOUNDARIES \ THE ART OF BEING UNIQUE  
\ DEFIANCE \ NON-CONFORMIST \ QUESTIONING THE  
FUTURE \ MULTI-HYPHENATES \ HYPER-CONNECTED \ NOT  
DEFINED BY ONE THING \ AMBITION \ DO-MORE, DO-ALL \ BE  
YOURSELF \ MAKING YOUR OWN HISTORY \ SHAPING YOUR  
OWN TOMORROW \ STAY TRUE \ BREAK BOUNDARIES \ THE  
ART OF BEING UNIQUE \ DEFIANCE \ NON-CONFORMIST \  
QUESTIONING THE FUTURE \ MULTI-HYPHENATES \ HYPER-  
CONNECTED \ NOT DEFINED BY ONE THING \ AMBITION \  
DO-MORE, DO-ALL \ BE YOURSELF \ MAKING YOUR OWN  
HISTORY \ SHAPING YOUR OWN TOMORROW \ STAY  
TRUE \ BREAK BOUNDARIES \ THE ART OF BEING UNIQUE  
\ DEFIANCE \ NON-CONFORMIST \ QUESTIONING THE  
FUTURE \ MULTI-HYPHENATES \ HYPER-CONNECTED \ NOT  
DEFINED BY ONE THING \ AMBITION \ DO-MORE, DO-ALL \ BE  
YOURSELF \ MAKING YOUR OWN HISTORY \ SHAPING YOUR  
OWN TOMORROW \ STAY TRUE \ BREAK BOUNDARIES \ THE  
ART OF BEING UNIQUE \ DEFIANCE \ NON-CONFORMIST  
\ QUESTIONING THE FUTURE \ MULTI-HYPHENATES \  
HYPER-CONNECTED \ NOT DEFINED BY ONE THING \  
AMBITION \ DO-MORE, DO-ALL \ BE YOURSELF \ MAKING  
YOUR OWN HISTORY \ BREAK BOUNDARIES \ FLOOR PLANS



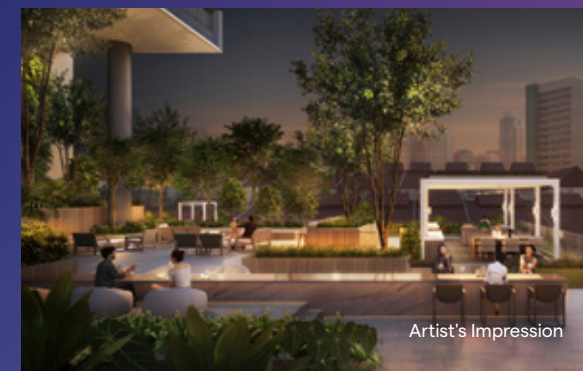
[illegible]





Artist's Impression

/ PART HOME /  
PART OFFICE  
/ PART PARK /  
PART GALLERIA



Artist's Impression

TMW Maxwell is designed for tomorrow's hybrid lifestyle. Just like how urbanites of tomorrow defy categorisation, TMW Maxwell blends home, office, park and gallery into one exciting offering.



Artist's Impression



# FLIP / SWITCH

FLIP / SWITCH units are designed with innovative, transformable furniture. Each permutation flips and switches to facilitate highly flexible and versatile living spaces. With every variation constantly adapting to the dynamic needs of the multi-hyphenate dweller.



\*Excluding Studio Loft units



# SPACE AS DYNAMIC AS YOU ARE

A home should adapt to the way you live. Not the other way round. In the city living of TMW Maxwell, we have designed clever spaces that flip/switch from day to night, live to work, for one person to a party of many.



WORK SETTING  
DAY SCENE  
4-5 PAX



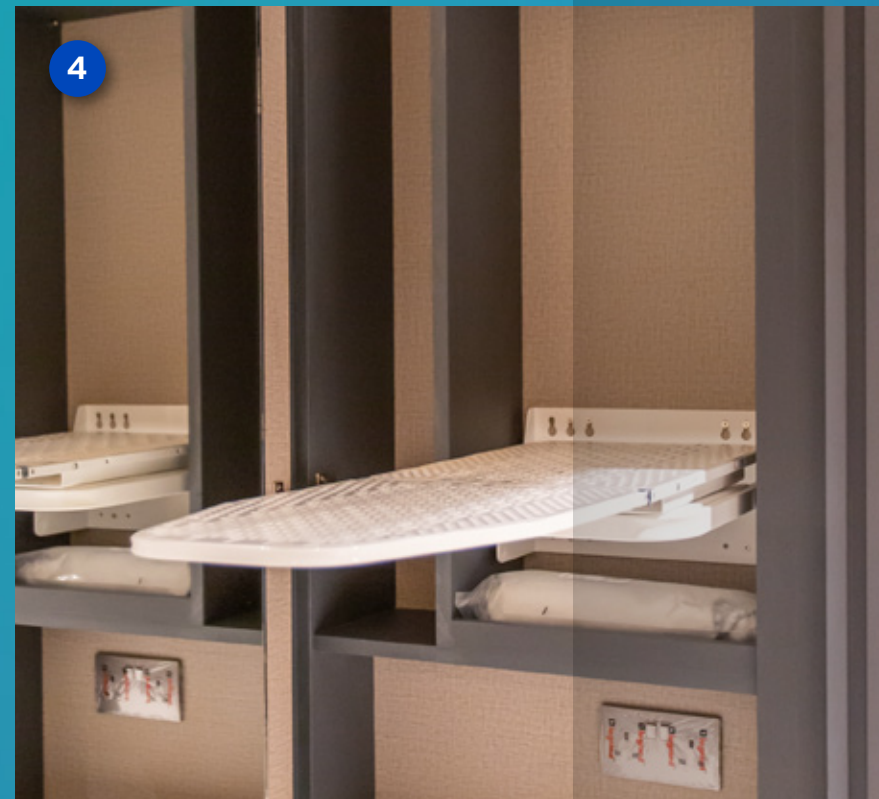
SOCIAL SETTING  
PARTY SCENE  
10-11 PAX



BEDROOM SETTING  
NIGHT SCENE  
1-2 PAX







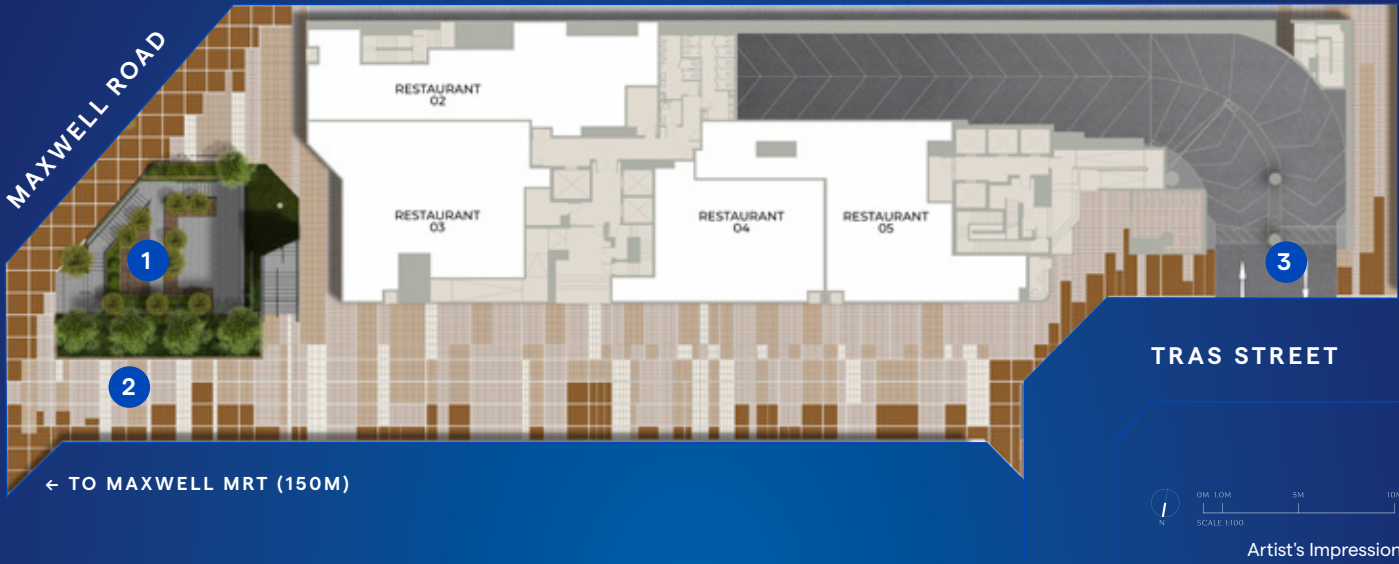
1 Movable Wardrobe with  
Flip-down Study Table  
2 Queen Size Murphy Bed  
with Integrated Sofa

3 Balcony Flip-down Table  
4 Integrated Flip-down Ironing Board  
5 Pull-out Counter in Laminate Finish  
complete with Cutlery Tray



# 1<sup>ST</sup> STOREY SITE PLAN

- 1 The Commons (B1)
- 2 The Stage
- 3 Vehicular Ingress & Egress



# 4<sup>TH</sup> STOREY SITE PLAN / THE COURTYARD

- |   |                  |    |                     |    |        |
|---|------------------|----|---------------------|----|--------|
| 5 | Courtyard Dining | 8  | Fitness Courtyard   | GS | Genset |
| 6 | Festival Lawn    | 9  | Courtyard Garden    |    |        |
| 7 | Courtyard Lounge | 10 | Farm-to-Fork Garden |    |        |



# PARK ON PARK

- |  |   |
|--|---|
| ROOF<br>TMW HAVEN  | 20 <sup>TH</sup> STOREY<br>SKY LOUNGE       |
| Sky Pavilion<br>Sky Lounger<br>Sky Deck                      | Panorama                                    |
| Outdoor Shower<br>Infinity Sky Pool<br>Sky Gym               | 18 - 19 <sup>TH</sup> STOREY<br>SKY BAR     |
| 15 - 16 <sup>TH</sup> STOREY<br>SKY POOL                     | All-day Bar<br>Cocktail Bar                 |
| Lazy Deck<br>Sky Jacuzzi<br>Outdoor Shower                   | 17 <sup>TH</sup> STOREY<br>WELLNESS TERRACE |
| 12 <sup>TH</sup> STOREY<br>SOCIAL GARDEN                     | Wellness Deck                               |
| TMW Social Club<br>Social Lounge<br>Social Blooms            | 13 <sup>TH</sup> STOREY<br>THE BAR LOUNGE   |
| 9 - 10 <sup>TH</sup> STOREY<br>OUTDOOR LIVING ROOM           | Plug and Work                               |
| Breakout Pod<br>The Living Room<br>Plug and Play             | 11 <sup>TH</sup> STOREY<br>DO-IT-ALL DECK   |
| 4 <sup>TH</sup> STOREY<br>THE COURTYARD                      | Executive Lounge                            |
| Courtyard Dining<br>Festival Lawn<br>Courtyard Lounge        | 6 - 7 <sup>TH</sup> STOREY<br>TMW STUDY     |
| Fitness Courtyard<br>Courtyard Garden<br>Farm-to-Fork Garden | Reading Alcove<br>Working Lounge            |

As lives and stories unravel at TMW Maxwell, a biophilic spectacle arises. Fronting the buzz of lively Maxwell Road are a series of vertically stacked gardens. Ascending from the pedestrian level in a breathtaking crescendo right up to the peak, these gardens are principally designed based on duality - versatile green spaces that adapt and change throughout any given day. While storeys from Level 4 onwards are exclusive to residents, the overall facade draws the admiration of all. Within it, a perfect synchrony of facilities, ambiances and spatial concepts.







# UNIT

UNIT FLOOR	01	02	03	04	05	06	07	08	09	10
20	1 BR+ S - C1	S - A4	1 BR+ S - C2	2 DK - E1	2 DK - E2	1 BR - B2	S - A3	1 BR - B1	POOL	
19	1 BR+ S - C1	S - A4	1 BR+ S - C2	2 DK - E1	2 DK - E2	1 BR - B2	S - A3	1 BR - B1	S - A3	S - A3
18	1 BR+ S - C1	S - A4	1 BR+ S - C2	2 DK - E1	2 DK - E2	1 BR - B2	S - A3	1 BR - B1	S - A3	S - A3
17	1 BR+ S - C1	S - A4	1 BR+ S - C2	2 DK - E1	2 DK - E2	1 BR - B2	S - A3	1 BR - B1	S - A3	S - A3
16	1 BR+ S - C1	S - A4	1 BR+ S - C2	2 DK - E1	2 DK - E2	1 BR - B2	S - A3	1 BR - B1	S - A3	S - A3
15	1 BR+ S - C1	S - A4	1 BR+ S - C2	2 DK - E1	2 DK - E2	1 BR - B2	S - A3	1 BR - B1	S - A3	S - A3
14	1 BR+ S - C1	S - A4	1 BR+ S - C2	2 DK - E1	2 DK - E2	1 BR - B2	S - A3	1 BR - B1	S - A3	S - A3
13	1 BR+ S - C1	S - A4	1 BR+ S - C2	2 DK - E1	2 DK - E2	1 BR - B2	S - A3	1 BR - B1	S - A3	S - A3
12	1 BR+ S - C1	S - A4	1 BR+ S - C2	2 DK - E1	2 DK - E2	1 BR - B2	S - A3	1 BR - B1	S - A3	S - A3
11	1 BR+ S - C1	S - A4	1 BR+ S - C2	2 DK - E1	2 DK - E2	1 BR - B2	S - A3	1 BR - B1	S - A3	S - A3
10	1 BR+ S - C1	S - A4	1 BR+ S - C2	2 DK - E1	2 DK - E2	1 BR - B2	S - A3	1 BR - B1	S - A3	S - A3
9	1 BR+ S - C1	S - A4	1 BR+ S - C2	2 DK - E1	2 DK - E2	1 BR - B2	S - A3	1 BR - B1	S - A3	S - A3
8	1 BR+ S - C1	S - A4	1 BR+ S - C2	2 DK - E1	2 DK - E2	1 BR - B2	S - A3	1 BR - B1	S - A3	S - A3
7	1 BR+ S - C1	S - A4	1 BR+ S - C2	2 DK - E1	2 DK - E2	1 BR - B2	S - A3	1 BR - B1	S - A3	S - A3
6	1 BR+ S - C1	S - A4	1 BR+ S - C2	2 DK - E1	2 DK - E2	1 BR - B2	S - A3	1 BR - B1	S - A3	S - A3
5	1 BR+ S - C1	S - A4	1 BR+ S - C2	2 DK - E1	2 DK - E2	1 BR - B2	S - A3	1 BR - B1	S - A3	S - A3
4	1 BR+ S - C1	S - A4	1 BR+ S - C2	2 DK - E1	2 DK - E2	1 BR - B2	S - A3	1 BR - B1	S - A3	S - A3

# DISTRIBUTION

- Studio
- 1-Bedroom Suite
- 1-Bedroom + Study
- 2-Bedroom Dual Key
- 2-Bedroom Premium
- Studio Loft

UNIT FLOOR	11	12	13	14	15	16	17	18	19	20
20	POOL				SL - F1	SL - F1	SL - F1	SL - F1	SL - F1	GYM
19	S - A3	S - A3	S - A3	S - A3	CLUBHOUSE	CLUBHOUSE	CLUBHOUSE	CLUBHOUSE	CLUBHOUSE	2 BR - D1
18	S - A3	S - A3	S - A3	S - A3						2 BR - D1
17	S - A3	S - A3	S - A3	S - A3						2 BR - D1
16	S - A3	S - A3	S - A3	S - A3						2 BR - D1
15	S - A3	S - A3	S - A3	S - A3						2 BR - D1
14	S - A3	S - A3	S - A3	S - A3						2 BR - D1
13	S - A3	S - A3	S - A3	S - A3						2 BR - D1
12	S - A3	S - A3	S - A3	S - A3						2 BR - D1
11	S - A3	S - A3	S - A3	S - A3	S - A1	S - A1	S - A2	S - A2	S - A2	2 BR - D1
10	S - A3	S - A3	S - A3	S - A3	S - A1	S - A1	S - A2	S - A2	S - A2	2 BR - D1
9	S - A3	S - A3	S - A3	S - A3	S - A1	S - A1	S - A2	S - A2	S - A2	2 BR - D1
8	S - A3	S - A3	S - A3	S - A3	S - A1	S - A1	S - A2	S - A2	S - A2	2 BR - D1
7	S - A3	S - A3	S - A3	S - A3	S - A1	S - A1	S - A2	S - A2	S - A2	2 BR - D1
6	S - A3	S - A3	S - A3	S - A3	S - A1	S - A1	S - A2	S - A2	S - A2	2 BR - D1
5	S - A3	S - A3	S - A3	S - A3	S - A1	S - A1	S - A2	S - A2	S - A2	2 BR - D1
4	S - A3G	S - A3G	S - A3G	S - A3G	S - A1	S - A1	S - A2	S - A2	S - A2	2 BR - D1



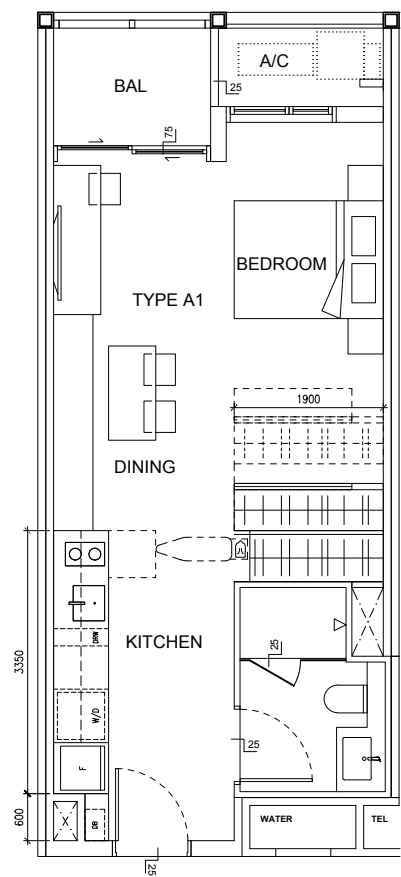
# STUDIO

## TYPE A1

- AREA

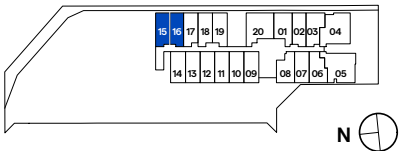
44.45 sqm (include 2.25 sqm A/C Ledge, 3.25 sqm Balcony)
- UNIT(S)

#04-15 to #11-15  
#14-15 to #18-15  
#04-16\* to #11-16\*  
#14-16\* to #18-16\*



NOTE:  
\*Mirror Image

Plans are subject to change/amendments as may be required and/or approved by the Developer and/or the relevant authorities and do not form part of any offer or contract. These are not drawn to scale and are for the purpose of visual presentation only. The balcony shall not be enclosed unless with the approved balcony screen. For an illustration of the approved balcony screen, please refer to APPROVED BALCONY SCREEN DESIGN page of this brochure.



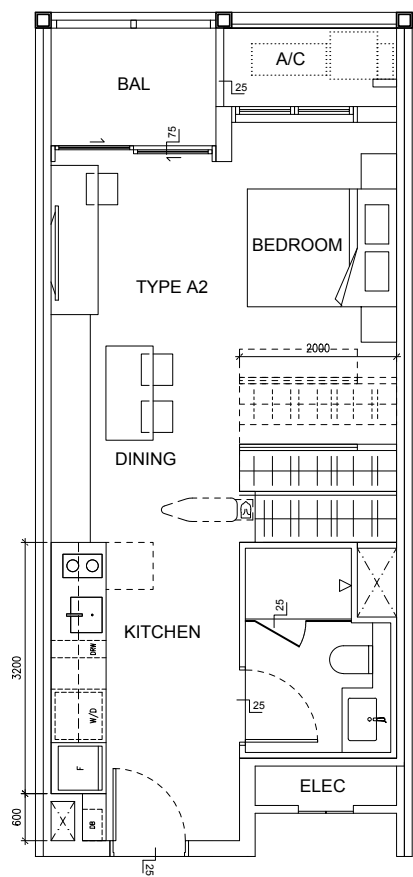
# STUDIO

## TYPE A2

- AREA

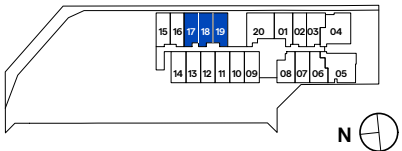
45.38 sqm (include 2.45 sqm A/C Ledge, 3.25 sqm Balcony)
- UNIT(S)

#04-17 to #18-17  
#04-18 to #18-18  
#04-19 \* to #18-19 \*



NOTE:  
\*Mirror Image

Plans are subject to change/amendments as may be required and/or approved by the Developer and/or the relevant authorities and do not form part of any offer or contract. These are not drawn to scale and are for the purpose of visual presentation only. The balcony shall not be enclosed unless with the approved balcony screen. For an illustration of the approved balcony screen, please refer to APPROVED BALCONY SCREEN DESIGN page of this brochure.



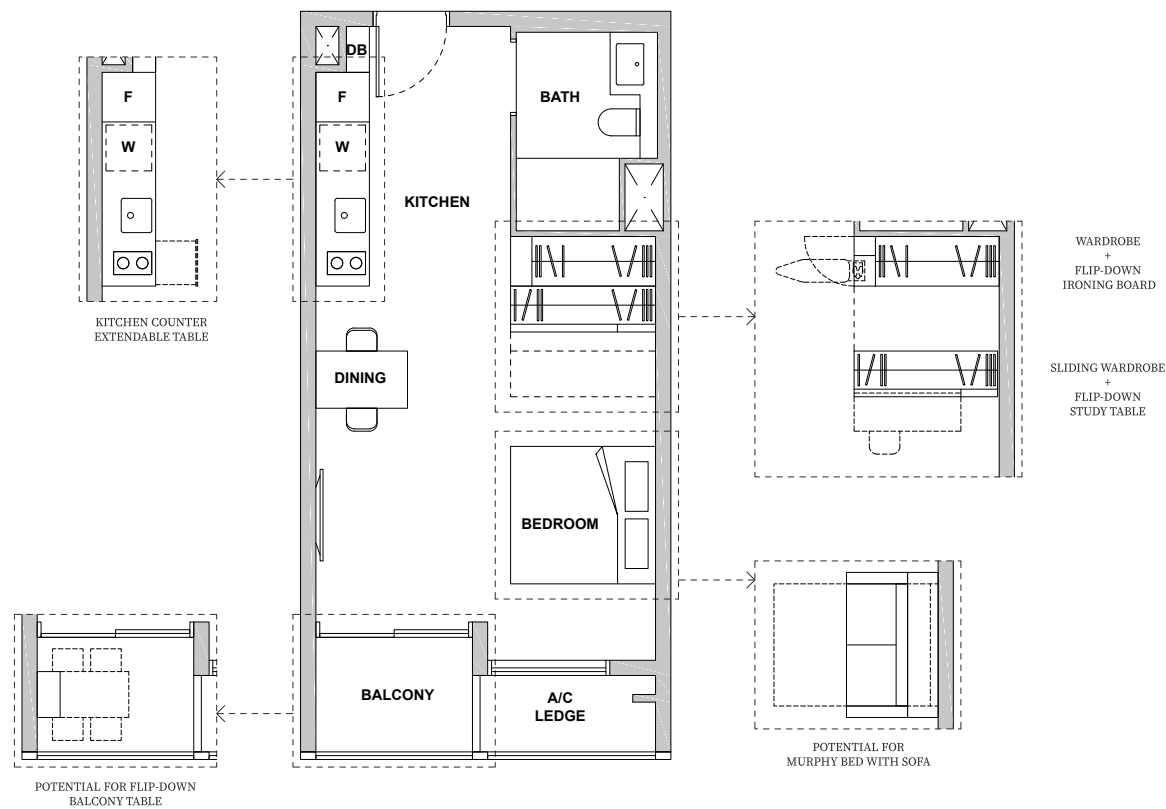


# STUDIO

## TYPE A3

AREA 44.25 sqm (include 2.45 sqm A/C Ledge, 3.32 sqm Balcony)

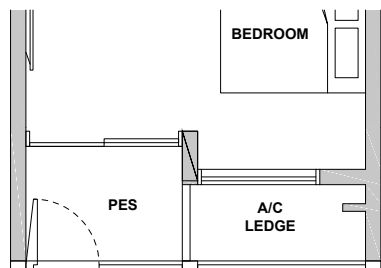
UNIT(S) #05-09 to #19-09  
#05-10 to #19-10  
#05-11 to #19-11  
#05-12 to #19-12  
#05-13 to #19-13  
#05-14 to #19-14



## TYPE A3-G

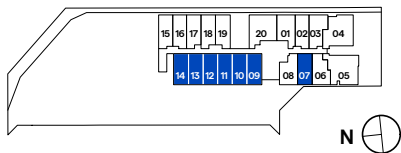
AREA 44.25 sqm ( include 2.45 sqm A/C Ledge, 3.32 sqm Balcony )

UNIT(S) #04-09  
#04-10  
#04-11  
#04-12  
#04-13  
#04-14



NOTE:  
\*Mirror Image

Plans are subject to change/amendments as may be required and/or approved by the Developer and/or the relevant authorities and do not form part of any offer or contract. These are not drawn to scale and are for the purpose of visual presentation only. The balcony shall not be enclosed unless with the approved balcony screen. For an illustration of the approved balcony screen, please refer to APPROVED BALCONY SCREEN DESIGN page of this brochure.

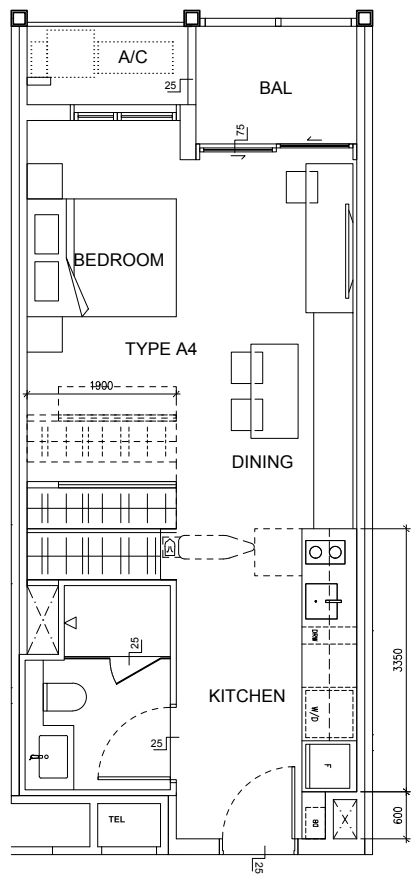


# STUDIO

## TYPE A4

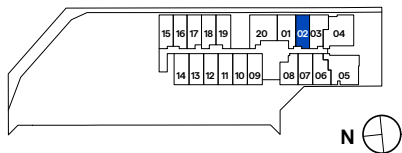
AREA 44.45 sqm (include 2.20 sqm A/C Ledge, 3.33 sqm Balcony)

UNIT(S) #04-02 to #20-02



NOTE:  
\*Mirror Image

Plans are subject to change/amendments as may be required and/or approved by the Developer and/or the relevant authorities and do not form part of any offer or contract. These are not drawn to scale and are for the purpose of visual presentation only. The balcony shall not be enclosed unless with the approved balcony screen. For an illustration of the approved balcony screen, please refer to APPROVED BALCONY SCREEN DESIGN page of this brochure.

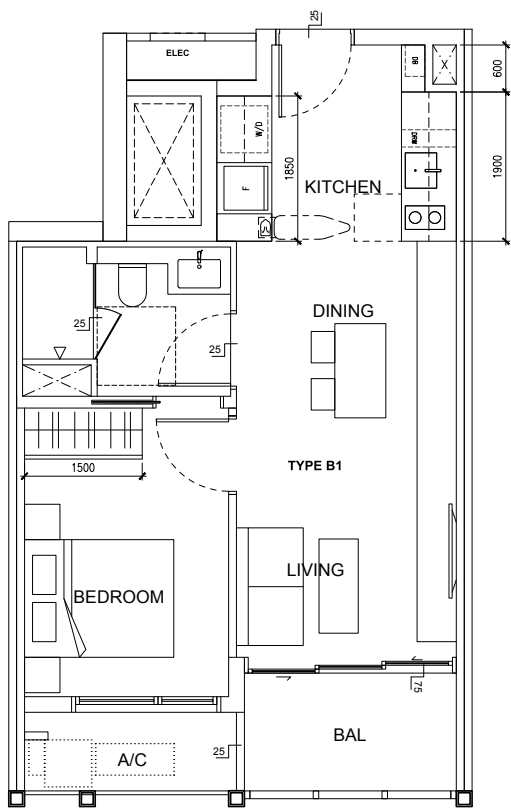




# 1-BEDROOM SUITE

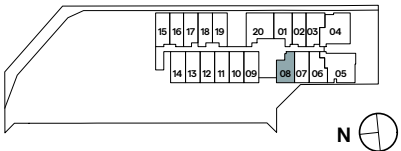
## TYPE B1

AREA 48.27 sqm (include 2.85 sqm A/C Ledge, 4.30 sqm Balcony)  
UNIT(S) #04-08 to #20-08



NOTE:  
\*Mirror Image

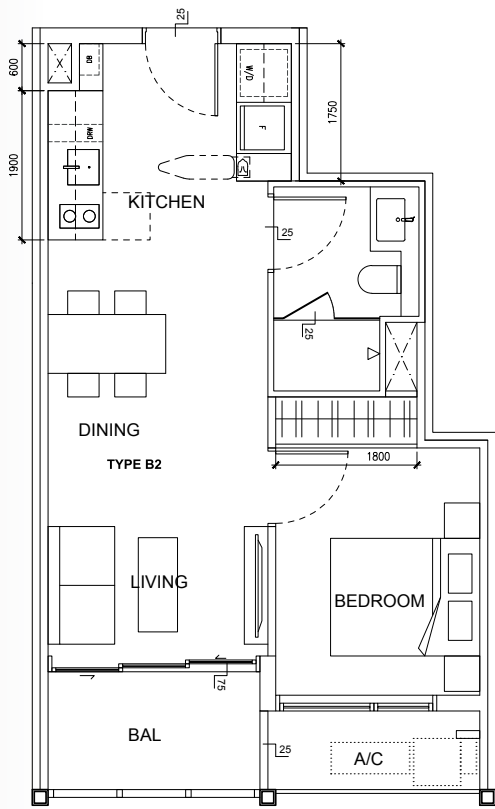
Plans are subject to change/amendments as may be required and/or approved by the Developer and/or the relevant authorities and do not form part of any offer or contract. These are not drawn to scale and are for the purpose of visual presentation only. The balcony shall not be enclosed unless with the approved balcony screen. For an illustration of the approved balcony screen, please refer to APPROVED BALCONY SCREEN DESIGN page of this brochure.



# 1-BEDROOM SUITE

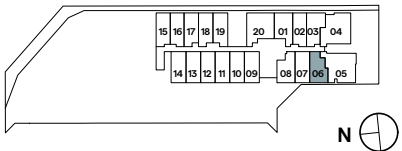
## TYPE B2

AREA 48.27 sqm (include 2.85 sqm A/C Ledge, 4.30 sqm Balcony)  
UNIT(S) #04-06 to #20-06



NOTE:  
\*Mirror Image

Plans are subject to change/amendments as may be required and/or approved by the Developer and/or the relevant authorities and do not form part of any offer or contract. These are not drawn to scale and are for the purpose of visual presentation only. The balcony shall not be enclosed unless with the approved balcony screen. For an illustration of the approved balcony screen, please refer to APPROVED BALCONY SCREEN DESIGN page of this brochure.

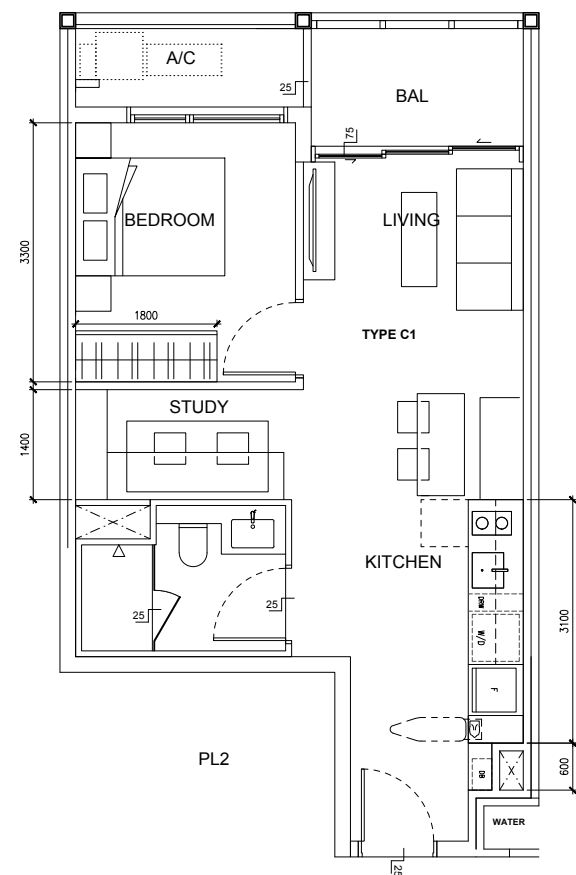




# 1-BEDROOM + STUDY

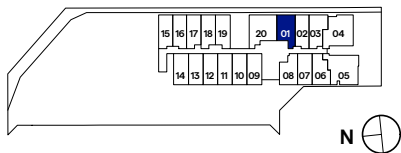
## TYPE C1

AREA 52.66 sqm (include 3.05 sqm A/C Ledge, 4.30 sqm Balcony)  
UNIT(S) #04-01 to #20-01



NOTE:  
\*Mirror Image

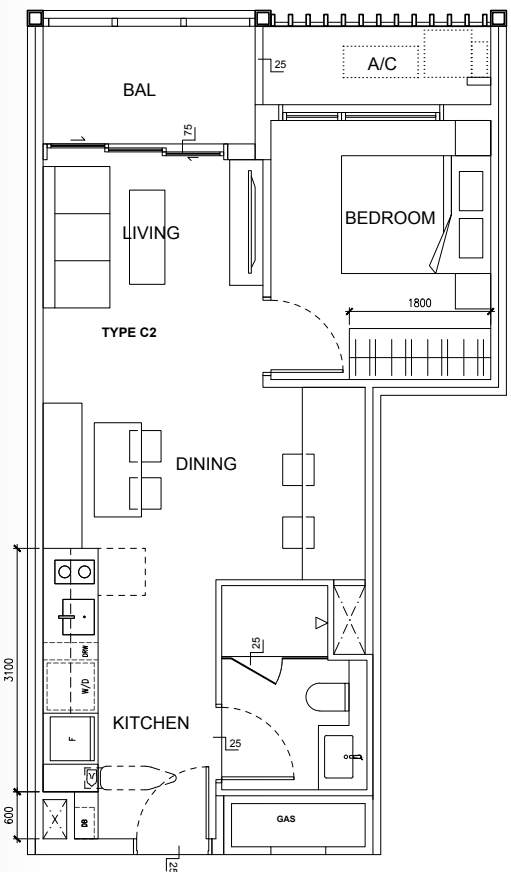
Plans are subject to change/amendments as may be required and/or approved by the Developer and/or the relevant authorities and do not form part of any offer or contract. These are not drawn to scale and are for the purpose of visual presentation only. The balcony shall not be enclosed unless with the approved balcony screen. For an illustration of the approved balcony screen, please refer to APPROVED BALCONY SCREEN DESIGN page of this brochure.



# 1-BEDROOM + STUDY

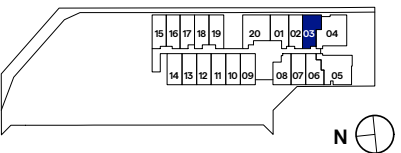
## TYPE C2

AREA 50.80 sqm (include 3.05 sqm A/C Ledge, 4.30 sqm Balcony)  
UNIT(S) #04-03 to #20-03



NOTE:  
\*Mirror Image

Plans are subject to change/amendments as may be required and/or approved by the Developer and/or the relevant authorities and do not form part of any offer or contract. These are not drawn to scale and are for the purpose of visual presentation only. The balcony shall not be enclosed unless with the approved balcony screen. For an illustration of the approved balcony screen, please refer to APPROVED BALCONY SCREEN DESIGN page of this brochure.

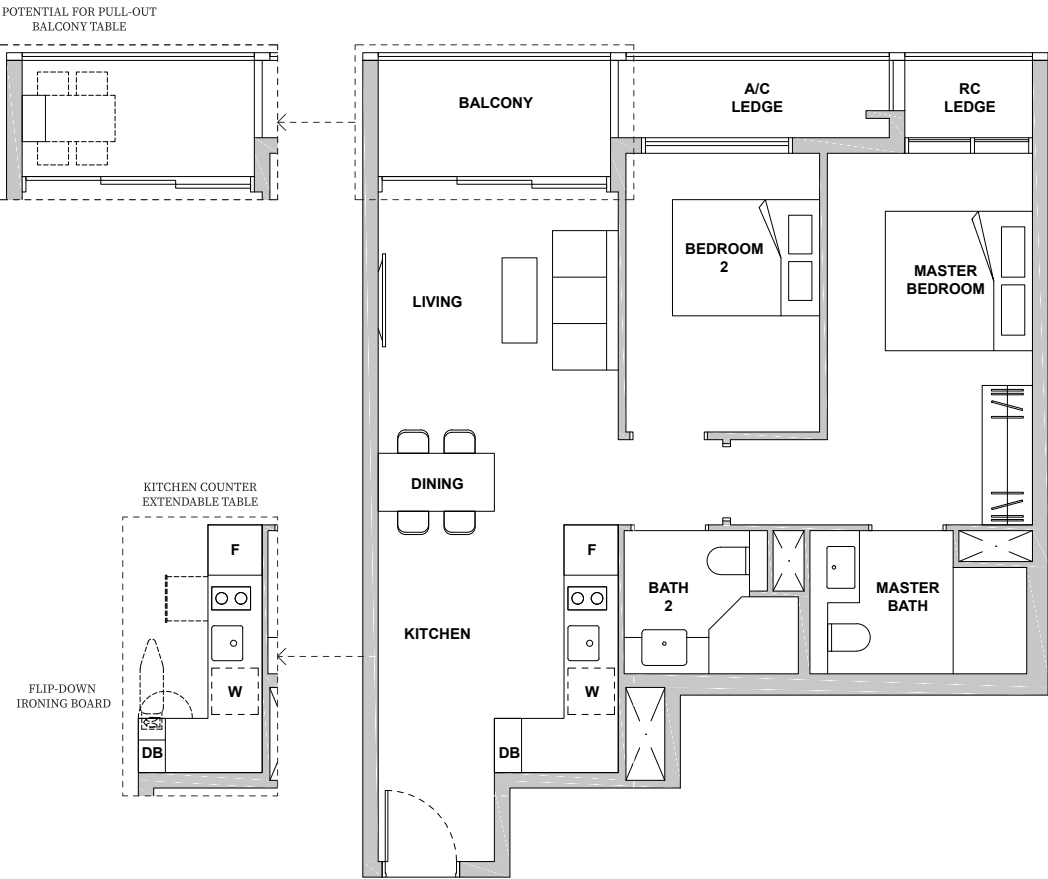




# 2-BEDROOM PREMIUM

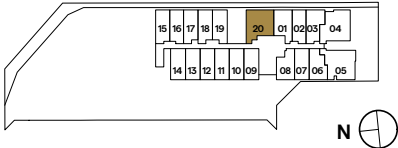
## TYPE D1

AREA 73.56 sqm (include 3.60 sqm A/C Ledge, 4.75 sqm Balcony)  
UNIT(S) #04-20 to #19-20



NOTE:  
\*Mirror Image

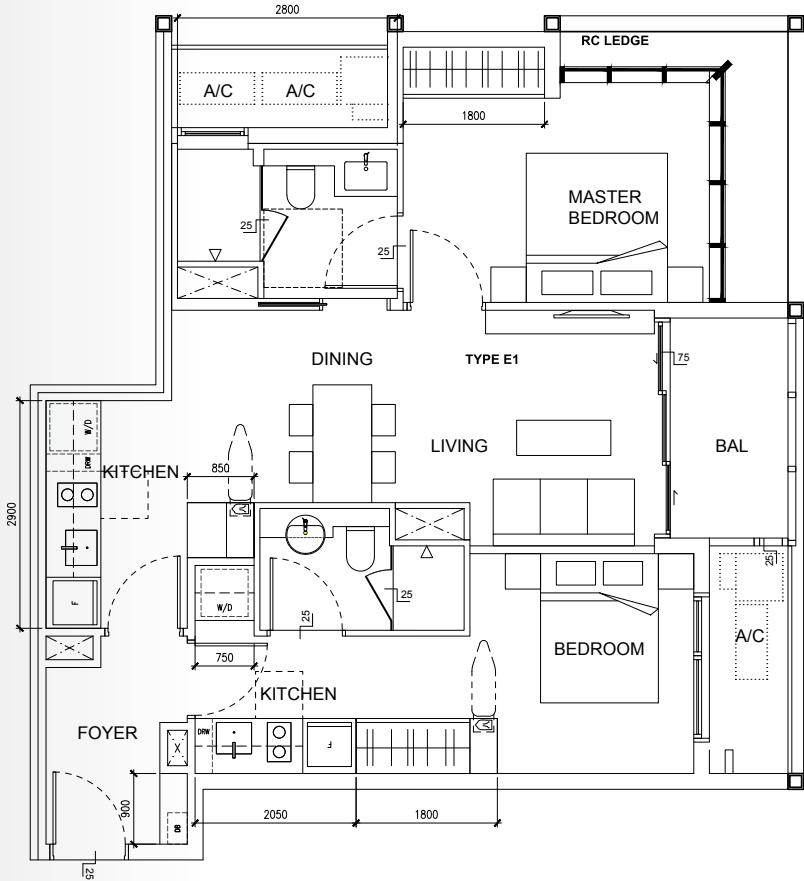
Plans are subject to change/amendments as may be required and/or approved by the Developer and/or the relevant authorities and do not form part of any offer or contract. These are not drawn to scale and are for the purpose of visual presentation only. The balcony shall not be enclosed unless with the approved balcony screen. For an illustration of the approved balcony screen, please refer to APPROVED BALCONY SCREEN DESIGN page of this brochure.



# 2-BEDROOM DUAL-KEY

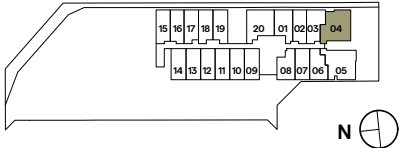
## TYPE E1

AREA 79.99 sqm (include 5.92 sqm A/C Ledge, 4.40 sqm Balcony)  
UNIT(S) #04-04 to #20-04



NOTE:  
\*Mirror Image

Plans are subject to change/amendments as may be required and/or approved by the Developer and/or the relevant authorities and do not form part of any offer or contract. These are not drawn to scale and are for the purpose of visual presentation only. The balcony shall not be enclosed unless with the approved balcony screen. For an illustration of the approved balcony screen, please refer to APPROVED BALCONY SCREEN DESIGN page of this brochure.

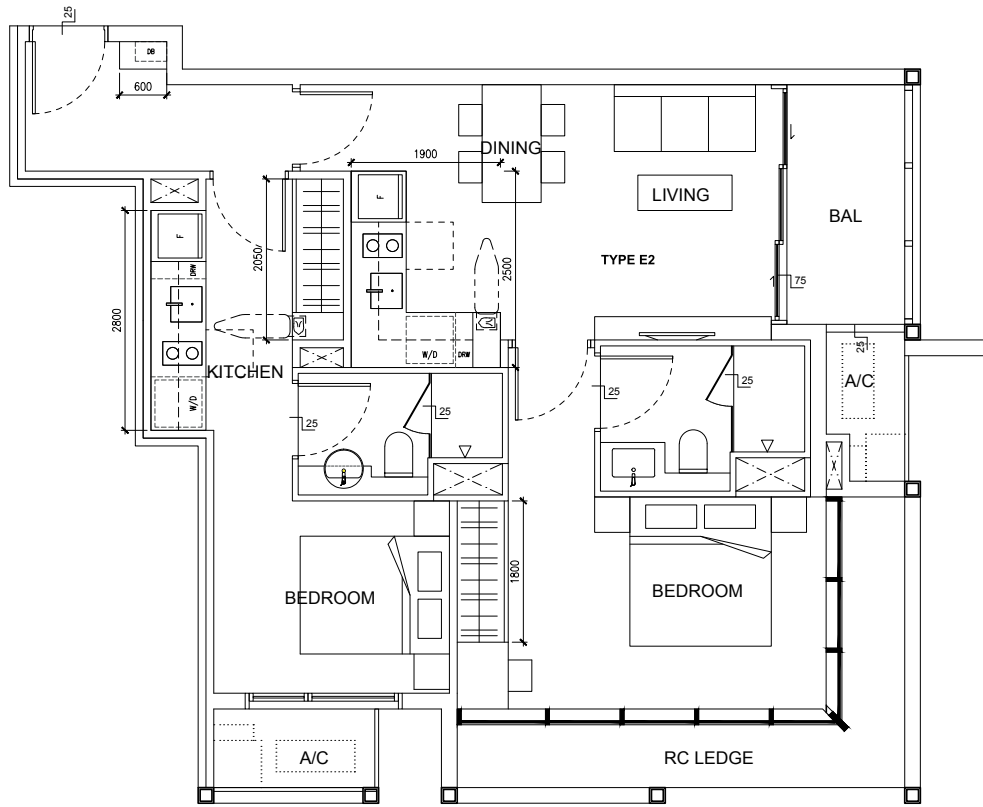




# 2-BEDROOM DUAL-KEY

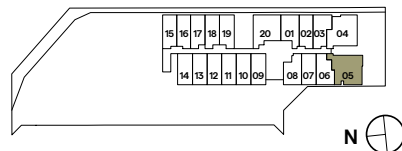
## TYPE E2

**AREA** 78.10 sqm (include 4.28 sqm A/C Ledge, 4.83 sqm Balcony)  
**UNIT(S)** #04-05 to #20-05



NOTE:  
\*Mirror Image

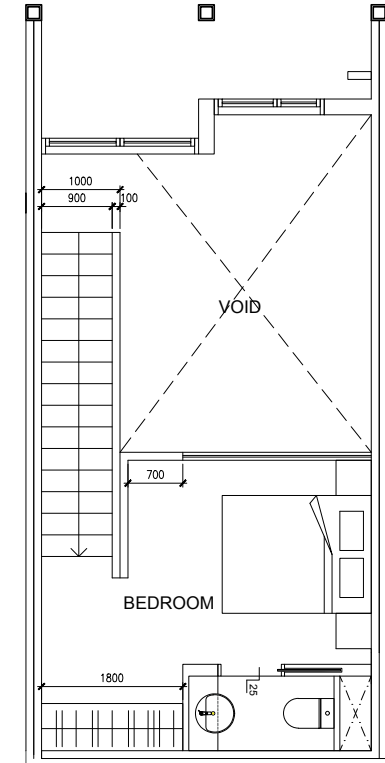
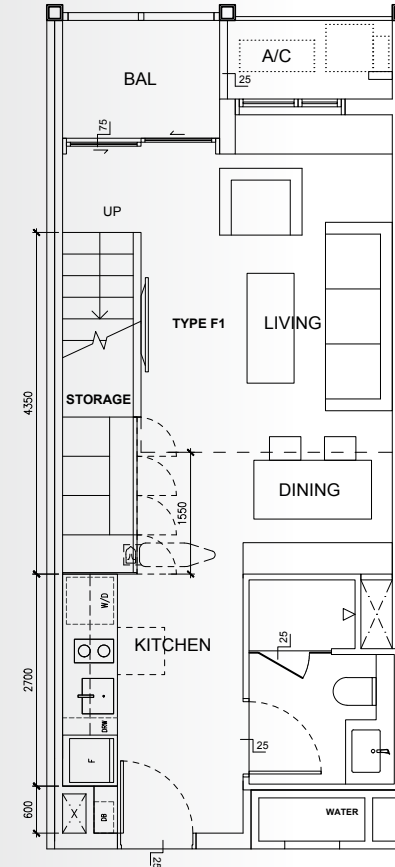
Plans are subject to change/amendments as may be required and/or approved by the Developer and/or the relevant authorities and do not form part of any offer or contract. These are not drawn to scale and are for the purpose of visual presentation only. The balcony shall not be enclosed unless with the approved balcony screen. For an illustration of the approved balcony screen, please refer to APPROVED BALCONY SCREEN DESIGN page of this brochure.



# STUDIO LOFT

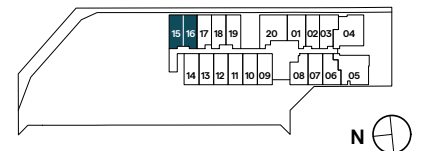
## TYPE F1

AREA	78.05 sqm (include 2.25 sqm A/C Ledge, 3.25 sqm Balcony)
UNIT(S)	#19-15 #19-16 *



NOTE:  
\*Mirror Image

Plans are subject to change/amendments as may be required and/or approved by the Developer and/or the relevant authorities and do not form part of any offer or contract. These are not drawn to scale and are for the purpose of visual presentation only. The balcony shall not be enclosed unless with the approved balcony screen. For an illustration of the approved balcony screen, please refer to APPROVED BALCONY SCREEN DESIGN page of this brochure.



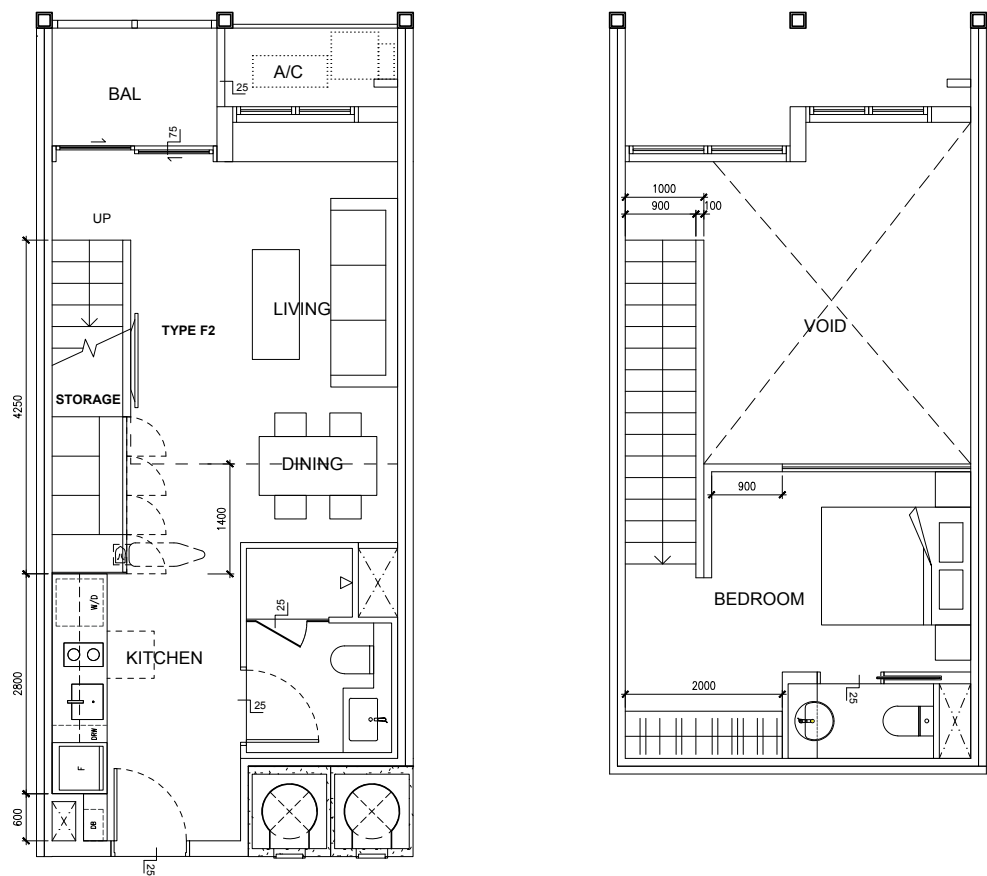


# STUDIO LOFT

## TYPE F2

AREA 80.63 sqm (include 2.45 sqm A/C Ledge, 3.25 sqm Balcony)

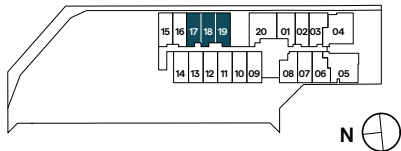
UNIT(S) #19-17  
#19-18  
#19-19 \*



NOTE:

\*Mirror Image

Plans are subject to change/amendments as may be required and/or approved by the Developer and/or the relevant authorities and do not form part of any offer or contract. These are not drawn to scale and are for the purpose of visual presentation only. The balcony shall not be enclosed unless with the approved balcony screen. For an illustration of the approved balcony screen, please refer to APPROVED BALCONY SCREEN DESIGN page of this brochure.



# MULTIPLE SMART FEATURES FOR THE MULTI-HYPHENATES

There is no place like home. For the multi-hyphenates of tomorrow, this certainly rings true here in TMW Maxwell where homes are fitted with multiple smart features that enable and empower simultaneous live, work and play lifestyles.



### SMART HOME HUB

A centralised control hub that connects to all compatible devices seamlessly.



### DIGITAL LOCKSET

Added convenience of touchless and remote door security.



### IP CAMERA

Remote monitoring of in-house activities for extra peace of mind.



### SMART AIR CONDITIONER CONTROLS

Wireless control over air conditioning optimises comfort levels even before every arrival home.



# BRANDED FINISHING TOUCHES

A beautifully curated material palette elevates the living experience, while premium fittings and appliances exude touches of elegance.





[illegible]



